



2024 Summer Block Placement Family Services Setting Briefing

May 4, 2024

Setting Coordinator: Ms. Ng Yee Ting, Omi

FAMILY

Provide an intimate environment in which physical care, mutual support and emotional security are normally available to foster the development of children into healthy and responsible members of society.

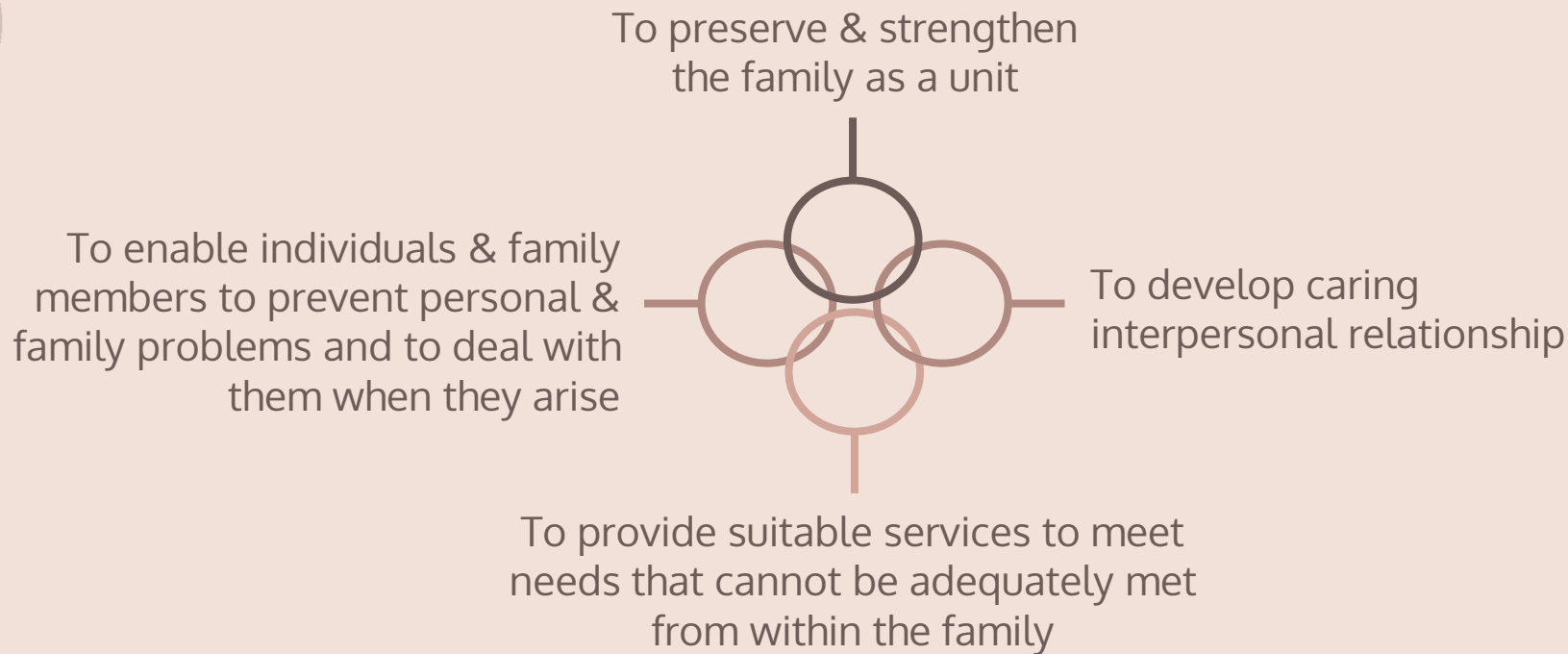


Family Social Work

The role of a family social worker...

[Being a social worker \(Children and Families\)](#)
[\(youtube.com\)](#)

Family and Child Welfare Services

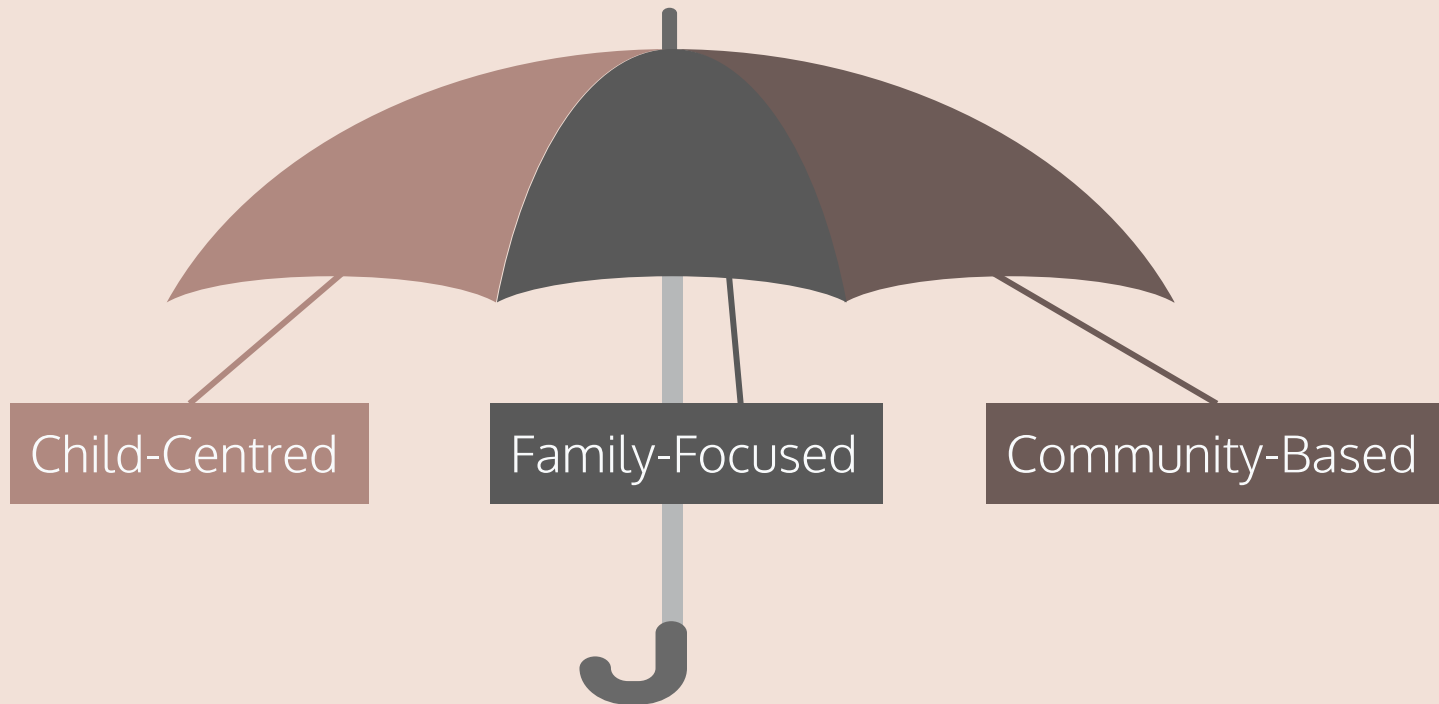


Integrated Family Services (Operated by SWD and NGO)

Main Objective

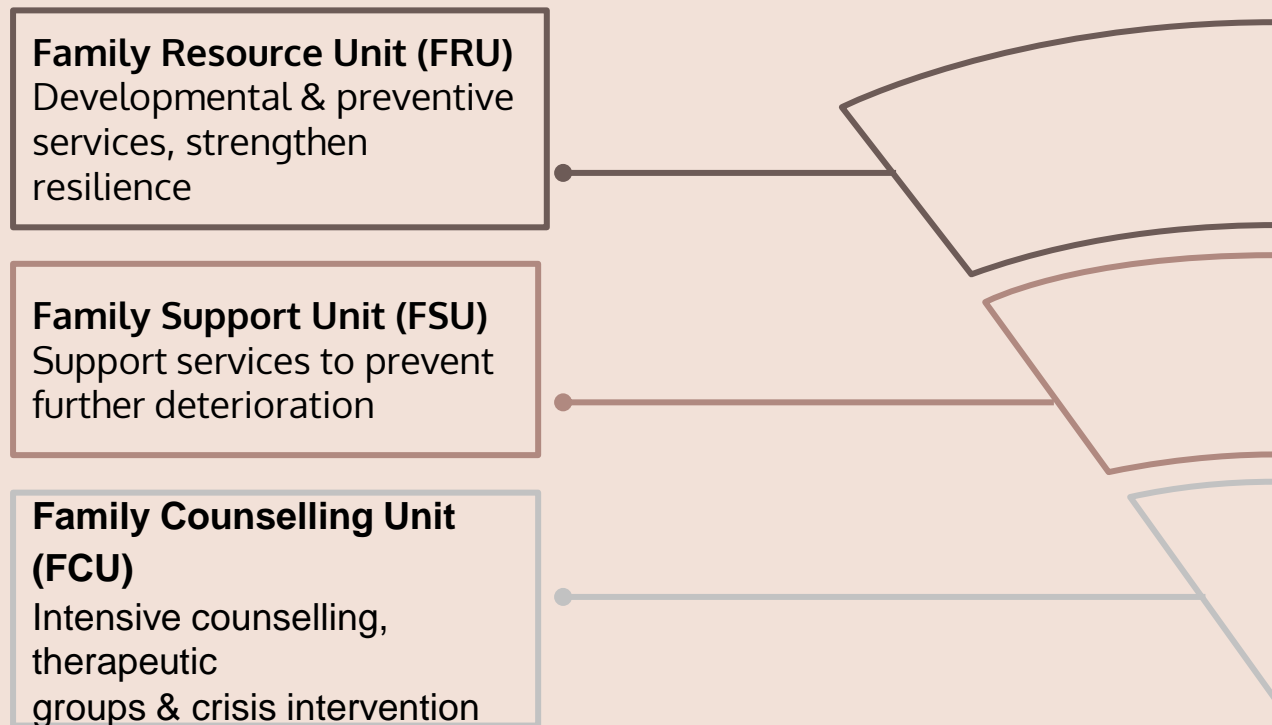
Serve as a 'community-based' integrated service centre focusing on supporting and strengthening families.

Integrated Family Services (Operated by SWD and NGO)- Direction



Integrated Family Services

IFSC 3 Tiered Delivery Model



Integrated Family Services

Service Content

- Enquiry service, resource corner, family life education, parent-child activities, group work service, program activities, volunteer training and service, outreaching service, counselling service and referral service.

Target Group

- Individuals and families in need with extended hour services.

List of Family & Child Welfare Services

- Charitable/ Trust Funds
- Departmental Hotline Service
- Family Aide Service
- Family & Child Protective Services
- Child Care Services
- Compassionate Rehousing
- Family Crisis Support Centre
- Multi-purpose Crisis Intervention & Support Centre
- Family Life Education
- Foster Care
- Integrated Family Services
- Refuge Centre for Women
- Services for Street Sleepers
- Services for victims of sexual violence
- Suicide Prevention Services
- Temporary Shelter/Urban Hostel for Single Persons
- Website on Support for victims of child abuse, spouse/cohabitant battering & sexual violence
- Working Group/Advisory Committee
- Adoption Service
- Residential Child Care Services
- Victim Support Programme for Victims of Family Violence
- Short-term Food Assistance Service Team
- Cross-Boundary and Inter-Country Social Services
- Project on Child Care Training for Grandparents
- Specialised Co-parenting Support Centre (support service for divorced/separated families)
- Support Programme for Enhancing Peaceable Relationship
- Outreaching Teams for Ethnic Minorities

IFSC Recommendation: Alternative Housing Assistance

- An inter-departmental referral mechanism between SWD and HD.
- Nature : Public Rental Housing (PRH) transfer, splitting of PRH tenancy, addition of family member(s) to PRH tenancy and other housing assistance for PRH tenants and PRH applicants.
- Remarks: Carefully consult agency and follow its procedures.

Short-term Food Assistance Service Team

Objectives

NGOs are commissioned to operate Short-term Food Assistance Service (STFAS) to help individuals and families who have difficulties in coping with their daily food expenditure.

Target group

- Unemployed
- Low-income earners
- New arrivals
- Street sleepers
- Individuals or families facing sudden change & immediate financial hardship

Pre-School Rehabilitation Services

- Early Education and Training Centre (EETC) 0 – 6 years old
- Integrated Programme in Kindergarten-cum-Child Care Centre (IP) 2 -6 yrs old
- On-site Pre-School Rehabilitation Services (OPRS) below 6 mild disabilities
- Special Child Care Centre (SCCC) 2- 6 moderate – severe disabilities
- Residential Special Child Care Centre (RSCCC) 2- 6 moderate – severe disabilities with residential care needs
- Occasional Child Care Service (OCCS) children 2 – 6 with disabilities & their siblings with temporary hrs – day care needs
- Training Subsidy Programme for Children on the Waiting List of Subvented Pre-school Rehabilitation Services (TSP)

Training Subsidy Program (TSP)

target

Children under 6 on the waiting List of subvented pre-school rehabilitation services, not attending any subvented pre-school rehabilitation services.

The monthly household income does not exceed 75% of the Median Monthly Domestic Household Income (MMDHI).

Application

SWD will issue letters to parent(s)/guardian(s) of children on the waiting list for subvented pre-school rehabilitation services to invite their application for TSP.

Applicants

Applicants could submit the original copy of the completed application form together with a copy of supporting documents by post or by hand to Rehabilitation and Medical Social Services Branch of SWD or submit the electronic form (e-Form) online.

Regularisation on Tier 1 Support Services to On-site Pre-school Rehabilitation Services (OPRS)

target

1. Children under 6 and studying in KGs/KG-cum-CCCs: Assessed or waitlisting assessment by CAC or having disabilities/special needs
2. Parents / carers and teachers / childcare workers of the children above.

Services

1. Consultation and training for teachers and childcare workers to conduct initial screening and teaching adaptation
2. Short-term training for children
3. Support for parent

Application

1. Parents/carers may consult the teachers or other professions if the child is assessed or awaiting assessment by CAC
2. Parents/carers can also approach the Project Team direct

Pilot Project on Tier 1 Support Services in Kindergartens/ Kindergartens-Cum-Child Care Centres

- Launched in 2020/21 school year and operated by 6 NGOs.
- Provide early intervention services for children awaiting assessment by Child Assessment Centres (CACs), or assessed by CACs to have borderline developmental problems.
- In about 80 KGs/KG-cum-CCCs participating in On-site Pre-School Rehabilitation Services (OPRS).
- Explored the feasibility to provide more comprehensive, flexible and ongoing support to cater the training needs of pre-school children with different levels of special needs.

“An abnormal reaction to an abnormal situation is normal behavior.”

By Victor Frankl

An Austrian psychiatrist and neurologist as well as a Holocaust survivor.

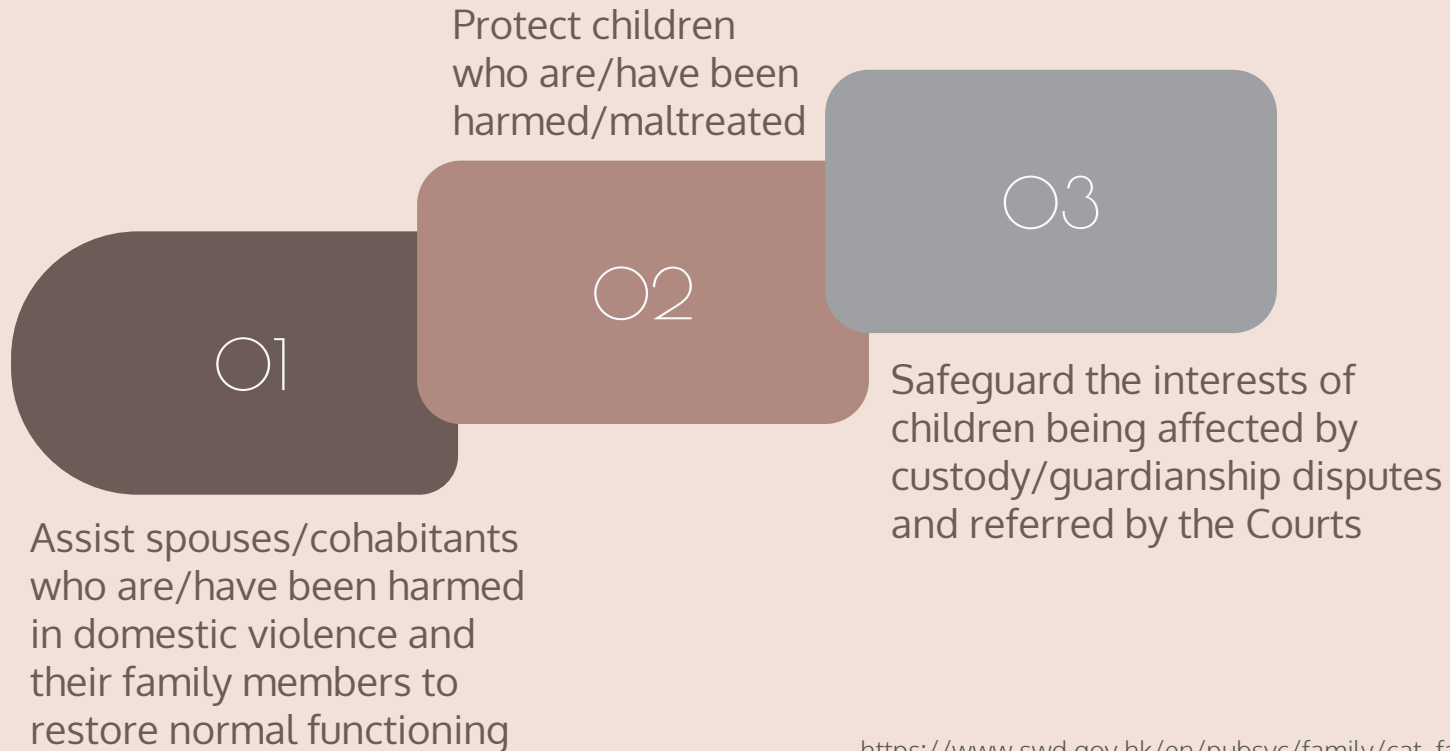
Ref: Man's Search for Meaning (1946; 1959; 1984), p. 32 in the 1992 edition, ISBN 0807014265, Beacon Press.



When working with a family and
their children...

Assessment of needs

Family and Child Protective Services (FCPSU) Objectives



Family and Child Protective Services (FCPSU)

- Direct Services
 - outreaching, investigation, early intervention, statutory protection, casework and group work services.
- Supportive services including clinical psychological services, child care services, residential child care services, residential services for victims of domestic violence and family aide service.
- Beware of envelope and phone number used; home visits risk assessment.

Family and Child Protective Services (FCPSU)

- A multi-disciplinary approach is adopted in the handling cases of child protection and domestic violence.
- Work with the Police for joint investigation on certain cases and to conduct video-recorded interviews for taking statement with children having been harmed/maltreated, aiming to minimising their trauma during the course of investigation.
- Launch Public education programmes to arouse public attention.

Compassionate Rehousing (CR)

- Aim at providing housing assistance to individuals and families who have genuine and imminent long-term housing needs but, due to their special social and medical needs, have no other feasible means to solve their housing problem.
- To be assessed comprehensively by professional social workers with their centre-in-charge/District Heads for recommendation to Housing Department.
- **Note:** Do **NOT** offer or mention to client prior to approval and consult centre in-charge.

Family Life Education Unit

- A form of community education which is preventive and developmental in nature.
- It aims to enhance family functioning, strengthen family relationship and prevent family breakdown through a wide range of educational and promotional programs such as seminars, talks, groups, family activities and exhibitions, etc.
- The major target groups include adolescents, couple- to-be, married couples, parents-to-be and parents.

Family Crisis Support Centre (Caritas-HK)

O1

Aim at tackling family crisis at an early stage.

O2

Provide a package of integrated and easily accessible services to assist individuals or families in crisis or distress.

O3

Services:

- 24-hour hotline service (18288)
- Short-term emergency intervention with overnight accommodation
- Temporary retreat & other support services

Refuge Centre for Women

- Providing temporary accommodation for women and their children who are facing domestic violence or family crisis.
- E.g. Harmony House, Wai On Home for Women, Sunrise Court, Dawn Court, Serene Court.
- Accept referrals from social workers and the Police and direct applications.
- Admit cases on a 24-hour-basis.

Multi-purpose Crisis Intervention and Support Centre (CEASE Crisis Centre, TW/GH)

Objectives

Provide comprehensive support to victims of sexual violence and individuals/families facing domestic violence or in crisis and to network them with appropriate health care and social services units for necessary protection and services.

Services

- Include a 24-hour hotline and immediate counseling
- outreaching services are provided for victims of sexual violence on 24-hour basis and victims of elder abuse after office hours of the Social Welfare Department
 - short-term accommodation service
 - Referral services

Foster Care Services

Foster Care

- Provides residential family care for children under 18 years of age
 - Whose parents cannot adequately take care of them due to special family circumstances.

Foster Care (Emergency)

- Provide immediate & short-term residential family care for children under 18 years of age.
 - Whose parents cannot care for them due to emergency/crisis situation.
- Duration of care should not exceed 6 weeks.

Small Group Homes

Small Group Homes

Provides residential family care for children from 4 to under 18 years of age.

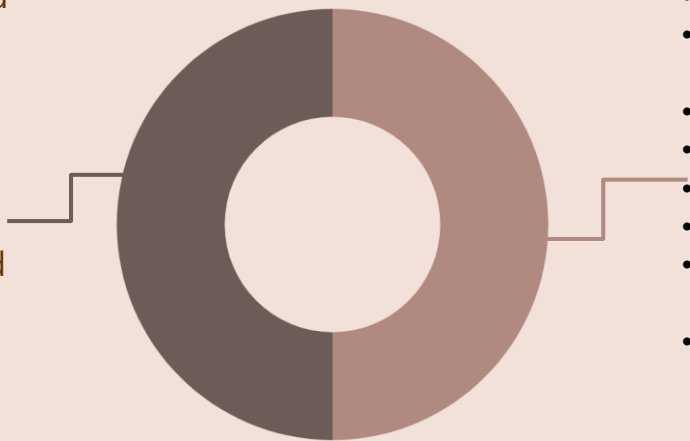
Small Group Homes (Emergency)

- Provide immediate & short-term residential family care for children from 4 to under 18 years of age.
 - Whose parents cannot care for them due to emergency/ crisis situation.
- Duration of care subject to review.

Integrated Service Centre for Social Rehabilitation & Community Support (SideBySide)

Objectives

- To provide one-stop integrated rehabilitation and community support services for the ex-offenders and their family members.
- To help the service users to reintegrate into the society and become law-abiding and contributive citizens.
- To better prepare the inmates who are about to be released to adjust to the society



Services:

- Pre-release Preparation Service
- Individual and Family Counseling Service
- Health Screening and Test
- Training and Employment Service
- Accommodation Service
- Short-term Aid
- Social Skills and Interests Development Programmes
- Hotline Service

International Social Services (HK) - Family Service (Cross Boundary and Inter-Country Social Service)

Objectives

Provide cross-boundary or international social services to help individuals or families divided by geography, with the assistance of ISS international network.

Services

- Pre-migration, cross-boundary and international family counseling & mediation
 - Court reports to local and overseas authorities
 - International tracing & child protection service
- Services for cross-boundary students and their families
 - Ripples Academy for Women Empowerment
- Hotline service, language courses and induction programme for new arrivals
 - Overseas Prisoners Service



Useful Assessment Tools and Guideline

Suicide Risk Assessment Guide

- Psychosocial factors associated with risk for suicide and suicide attempts.
- These include recent life events such as losses (esp. employment, careers, finances, housing, marital relationships, physical health, and a sense of a future.
- Psychological states of acute or extreme distress (especially humiliation, despair, guilt and shame) are often in association with suicidal ideation, planning and attempts.
- These are warning signs of psychological vulnerability and indicate a need for mental health evaluation to minimize immediate discomfort and to evaluate suicide risk.

Crisis Intervention

- Conduct initial assessment and identify immediate risk factors.
- Encourage the victims to stay safe/remain in the agency and report immediately to the agency supervisor (senior social worker or intake worker), then FWS.
- Consult agency supervisor for agency protocol in handling procedures (i.e. conduct crisis out-reaching, escort services, arrangement of shelter or tangible resources, etc.).
- Pair-up with agency colleagues when conducting crisis intervention.
- FWS would discuss with agency for case follow-up or transferal for agency colleague's follow-up after assessment and discussion with agency.

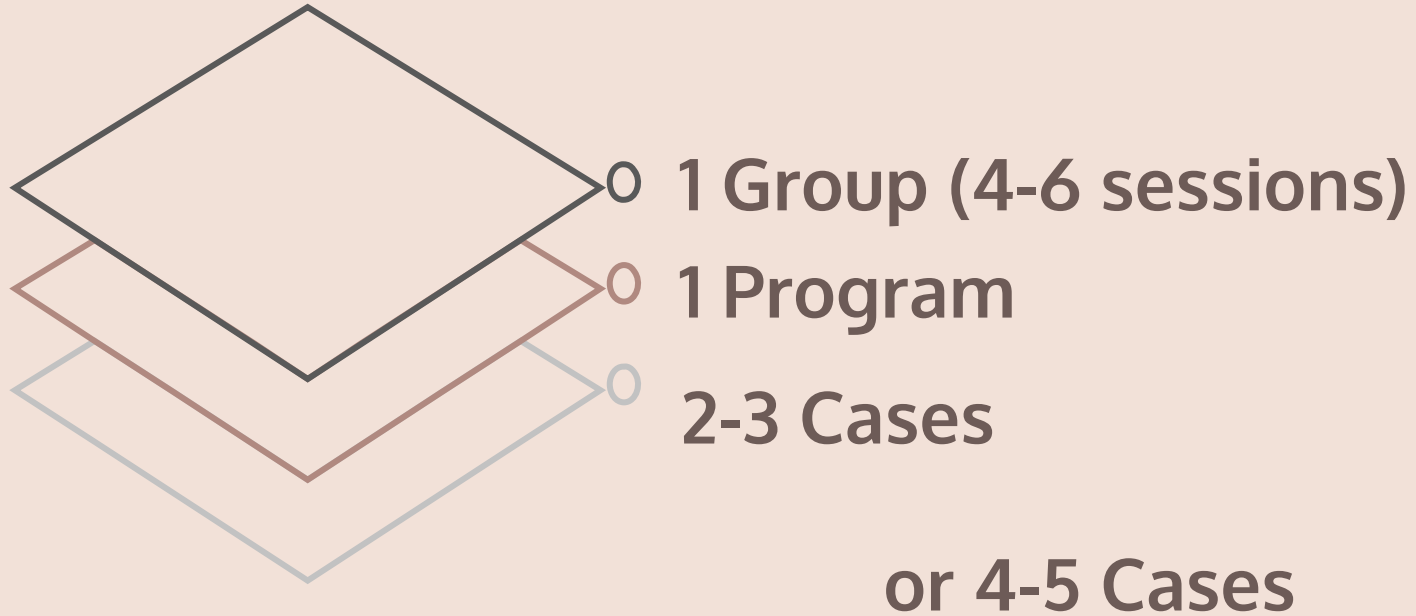
Assessment of Child Protection and Domestic Violence Guidelines

- Procedural Guide for Handling Intimate Partner Violence Cases (Revised 2011)
- Procedural Guidelines for Handling Adult Sexual Violence Cases (Revised 2021)
- Protecting Children from Maltreatment – Procedural Guide for Multi-disciplinary Co-operation (Revised 2020)
- Guidelines on Subventions and Subsidies for Aided Standalone Child Care Centres (January 2024)

Assignments – AI

- To maintain clients' confidential data and in line with the ethical practice of the profession and the requirements of the personal data (Privacy) Ordinance, 1995).
- Reiterated in the social work fieldwork placement handbook.
- **Only Grammarly is accepted.** Other AI generated language models for fieldwork courses are prohibited.
- Consequences of grades deduction could be resulted.

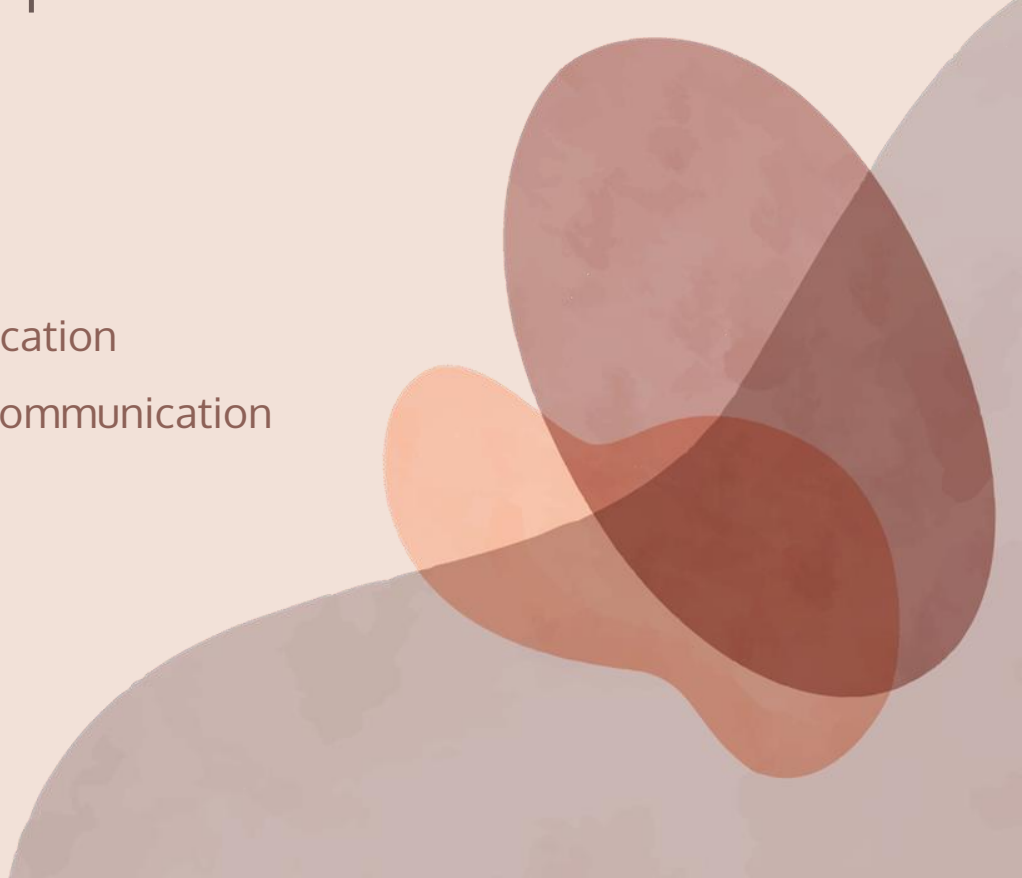
Assignments



Group Ideas

Parent/adult:

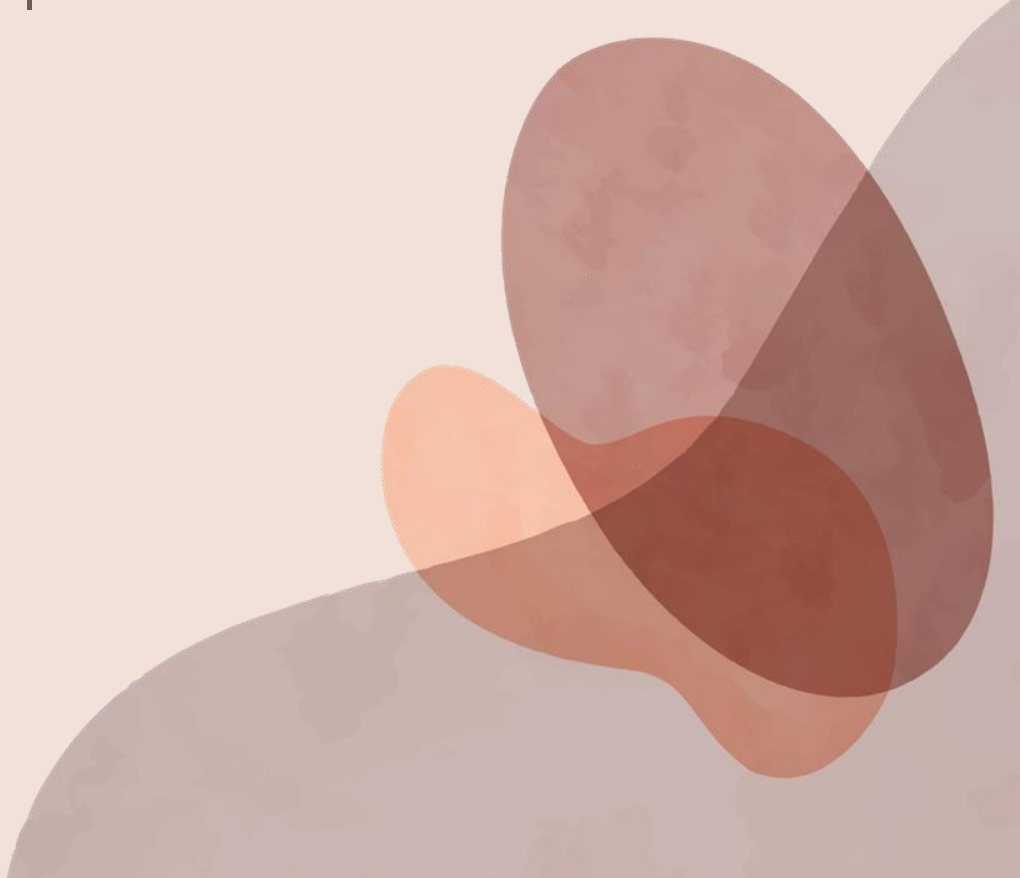
- Parenting skills training
- Self Care/Self Compassion
- Par Group: Parent-child communication
- Stress/emotional management communication
- Networking against loneliness
- Couple/marital relationship



Group Ideas

Children/teenagers/volunteers:

- Resilience building
- Emotional/stress management
- Social skills training
- Volunteer training
- Leadership training
- Peer relationship strengthening
- Social skills enhancing



Case Nature

Counselling:

- Family relationship
- Marital relationship
- Emotional/stress challenges
- Parenting: SEN, study, emotional management
- Mental health
- Risk taking behavior: Self Harm, addiction/substance abuse, etc.



Case Nature

Tangible:

- Recommendation for location preference, social-housing
- Recommendation for split household for , alternative housing assistance (SWD IFSC only)
- DCA application, Rainbow Fund application
- Pre-School Rehabilitation Services application (e.g. EETC, OPRS, SCCC)
(https://www.swd.gov.hk/tc/pubsvc/rehab/cat_serpresch/)
- Long Term Care Services Delivery System (e.g. SCNAMO, LDS)
(https://www.swd.gov.hk/tc/pubsvc/elderly/elderly_info/assess/scnam_cwl/)
- Referral for food assistance, ICCMW, shelter, financial assistance, temporary housing, etc.

Program Ideas

- Family – 5 Love Languages, positive communication
- Play Fun – The importance of play, gaming & sports related
- Parent Child Sex-Education – Protect your body
- Road Show – Mental health, suicide prevention, against child abuse, against domestic violence, family harmony, positive parenting

Attitude



Punctual



Self-initiative to learn
from service team



Responsible,
early preparation



Polite, respect
& care



Confidentiality &
Social Media



Self-discipline, time &
work management



Flexibility & shoulder
additional duties

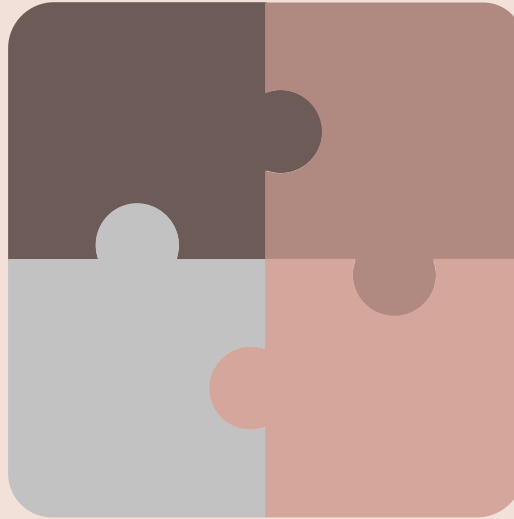


Blend into
the team
& dress code

Knowledge/Skills

Community
Resources &
Services

Needs of
Different Service
Users



Relative Conceptual &
Intervention Models,
Risk assessment

Communication
Skills

Agency Visits & Mid-placement Sharing

- Two agency visits and 1 mid-placement sharing.
- All mandatory, absence of approval is required from FWS and setting coordinator in advance.
- Punctuality and appropriate dress code is required.
- Count as placement hours as part A in placement hour form.
- Mealtime and travelling hours between agency venues 1 & 2, and placement agency could be counted.

Agency Visit 1

Agency

TWGH Cross Centre (Central Western, Southern and Islands Office)

Date

June 5, 2024 (Wed)

Time

9:30 am – 12:30 pm

Venue

Room 1501-1504, 15/F, Tung Ning Building, 2 Hillier Street, Sheung Wan, Hong Kong

Agency Visit 2

Agency

The Hong Kong Catholic Marriage Advisory Council - KID First Specialised Co-parenting Support Centre (HK)

Date

June 5, 2024 (Wed)

Time

2:30 pm – 5:00 pm

Venue

Unit A-E, 7/F, Eastern Commercial Centre, 397 Hennessy Road, Hong Kong

Mid-Placement Sharing

Agency	Caritas Family Crisis Support Centre
Date	June 25, 2024 (Tues)
Time	10:00 am – 12:00 pm
Venue	50 Kwun Tong Road, Kowloon

Family Setting Coordinator

Name	Ms. Ng Yee Ting, Omi
Email	oytng@hku.hk
Tel. No.	3917-2070
Office	Rm 555, The Jockey Club Tower, Centennial Campus

THANKS

Do you have any questions?

Good luck 😊

