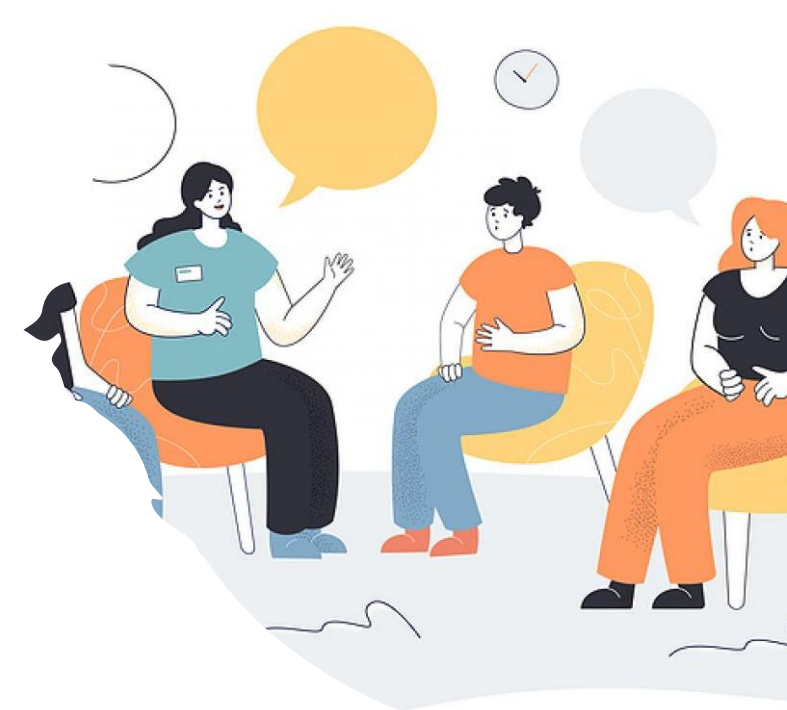


Placement Briefing Session

School Social Work Service

SETTING COORDINATOR: IRENE LAW

23 NOV 2024



School Social Work Service

School Settings

- Primary Schools / Secondary Schools
- Others: Kindergartens / Schools for Social Development

Objectives of School Social Work Service



- To help students with the personal, family, interpersonal or schooling problem
 - remedial
- To help students develop personal potential and achieve healthy personal growth
 - developmental and educational



School as Secondary Setting

- Working inside a setting where other professionals are majority
- The number of social workers is low
- Important professional role in the school
- Collaborate with different parties and professionals

Service targets

Students
(mainly)

Parents/
family
members

teachers

School
system

Roles of school social worker



Counselor -supports emotional, mental health and developmental challenges



Consultant -advises teachers and parents



Coordinator -links students to community resources



Educator -community and relationship building

Natures of Work

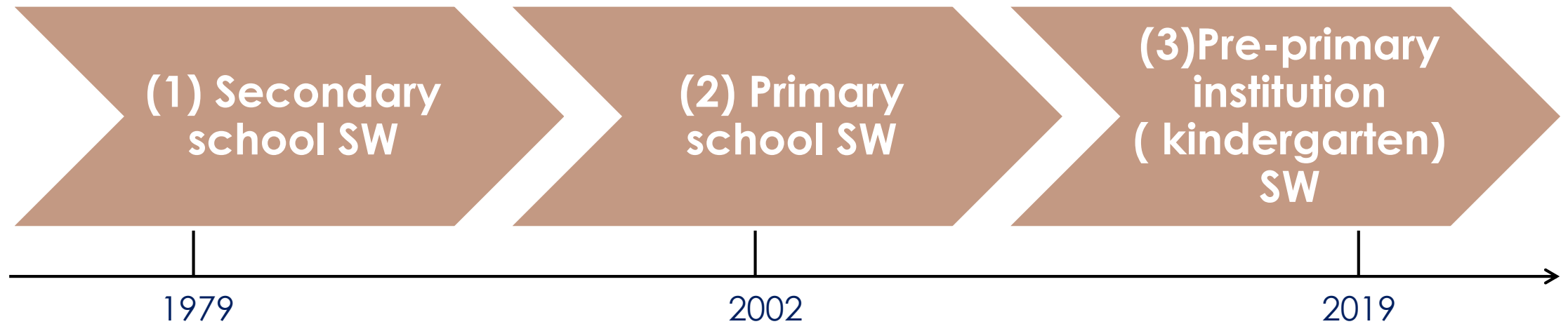
Casework

Groupwork, program, project

Enquiries / consultation

Coordination of community resources

The development of school social work service





Secondary school social work : Service Development

1979 : Government started the plan and
implementation of school social service
: Funded by SWD and employed by NGO
: 1 social worker for 4 secondary schools

1995: 1 social worker for 2 schools

2000: 1 social worker for 1 school

2019: 2 social workers for 1 school

Service operation in secondary school

As at 1 September 2024, 34 NGOs operate stationing school social work service for 462 secondary day schools over the territory.

Two modes of service operation:

(1) Independent mode: Independent school social work unit

- Serve schools in different areas
- focus on the school social work service provision

(2) Attachment mode: Centre team (Integrated Children and Youth Centre)(ICYSC)

- serve 2-3 secondary schools in a designated area
- Allocate designated staff to station at school as school social worker
- near the location of the ICYSC
- Closely work with the centre and more resources can be shared and mobilized

Types of cases

- **Related to schooling (unmotivated to study, study stress, study method, career planning etc.)**
- **School adjustment**
- **Peer relationship**
- Behavioral problems
- Developmental adjustment
- Emotional/ mental health
- Sex-related issues
- Family related problems



Types of groups & programs

- **Social and emotional development:**
Emotional management, social skills groups, stress reduction, school adjustment, etc.
- **Career development :**
Career planning workshops, self-understanding etc.
- **Community engagement and personal development:**
Volunteer services, leadership training, fun fair, exhibitions, visits, outing or day camps etc.



Primary school social work: Service Development

- Before 2002, 1 school had 1 full-time Student Guidance Officer/Student Guidance Teacher(SGO/SGT) performed by teachers with counseling training to provide student support and counseling service.
- **In 2002, Government subvention had been given to primary schools to purchase school social service through service bidding.**
- Social Workers are employed directly by schools or NGOs which provide the service through the service bidding.
- **In 2018,1 social worker for 1 primary school**



Major types of cases

- Learning problem(Special Educational Needs)
- Behavioral problem
- Emotional problem
- Relationship problem
- Physical and health problem
- Family related problem



Types of groups & programs

- Social skills groups
- Emotional management groups
- Problem solving groups

- Parents workshops / talks
- Volunteer services
- Fun fair / exhibitions
- Visits / day camps /outings

Pre-primary Institutions (Kindergarten) : Service Development

- **2019:** 3-year Pilot Scheme on Social Work Service for Pre-primary Institutions (SWSPPI) was launched
- **2023:** Social Work Service for Pre-primary Institutions was regularized and implemented

: services are provided by NGOs





Services provided:

- Provide counseling and referral to related services for children and families
- Parenting education groups and talks
- Thematic activities to consolidate family relationship
- Professional consultations for teaching staff and parents
- Crisis management for case in need

Schools for Social Development (群育學校)



Schools for Social Development (SSD)

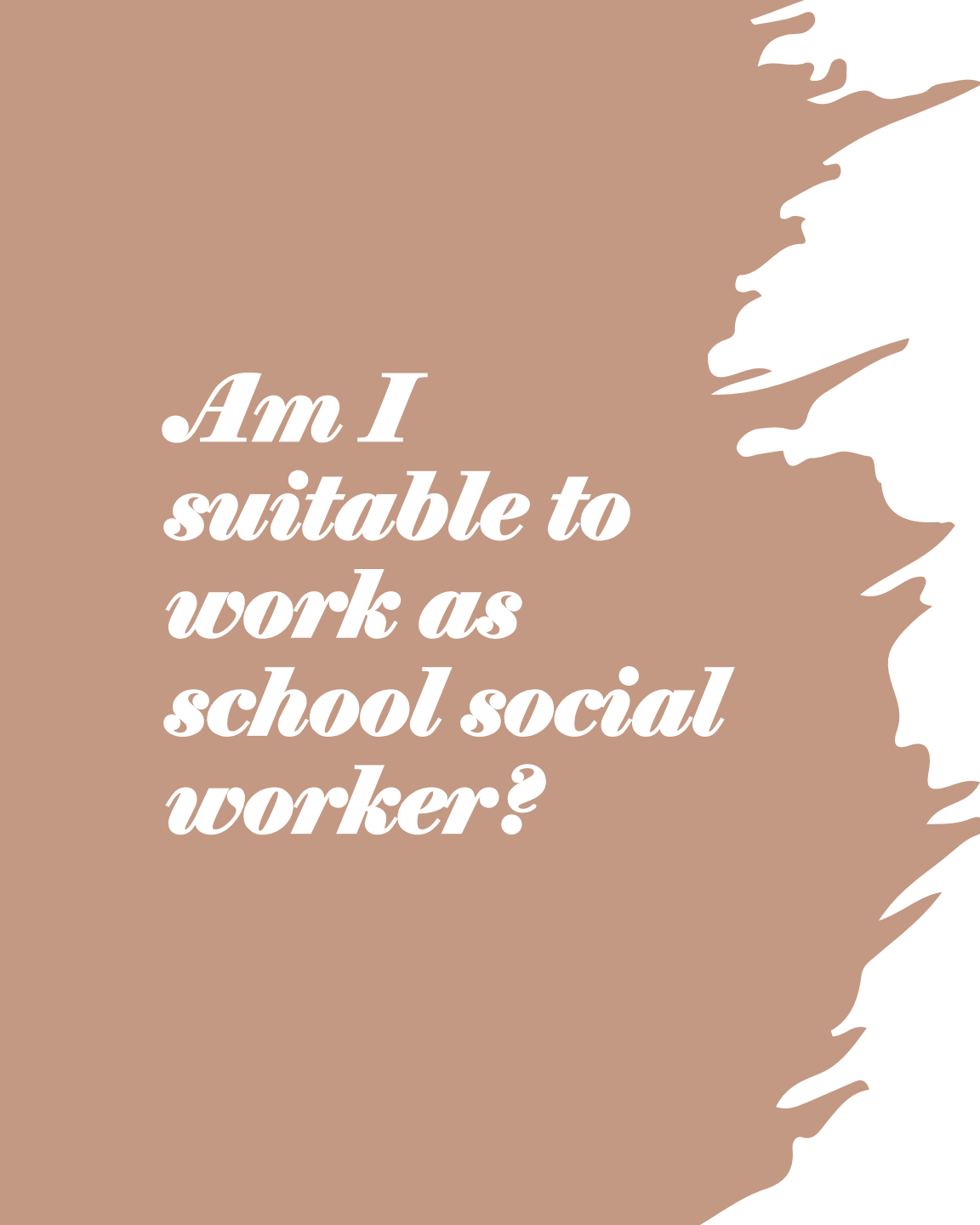
- Under the category of “Special Schools”
- A total of 8 SSDs in Hong Kong
- Providing intensive support for students from P.1 to F.6 with **moderate to severe emotional and behavioural difficulties**
- Provides both **long-term and short-term adaptation programmes** for students

Services provided by school social workers

Case	<ul style="list-style-type: none">• Provide students with counselling that focuses on their emotional, family and social problems
Group	<ul style="list-style-type: none">• Adaptation group for P.6 students• Educational and growth group targeting social skills, emotional management, self-efficacy, empathy etc.
Programme	<ul style="list-style-type: none">• Volunteer services e.g. visiting elderly centres, elderly people living alone etc.• Life planning programme e.g. life simulation game• School visits at mainstream secondary schools etc.

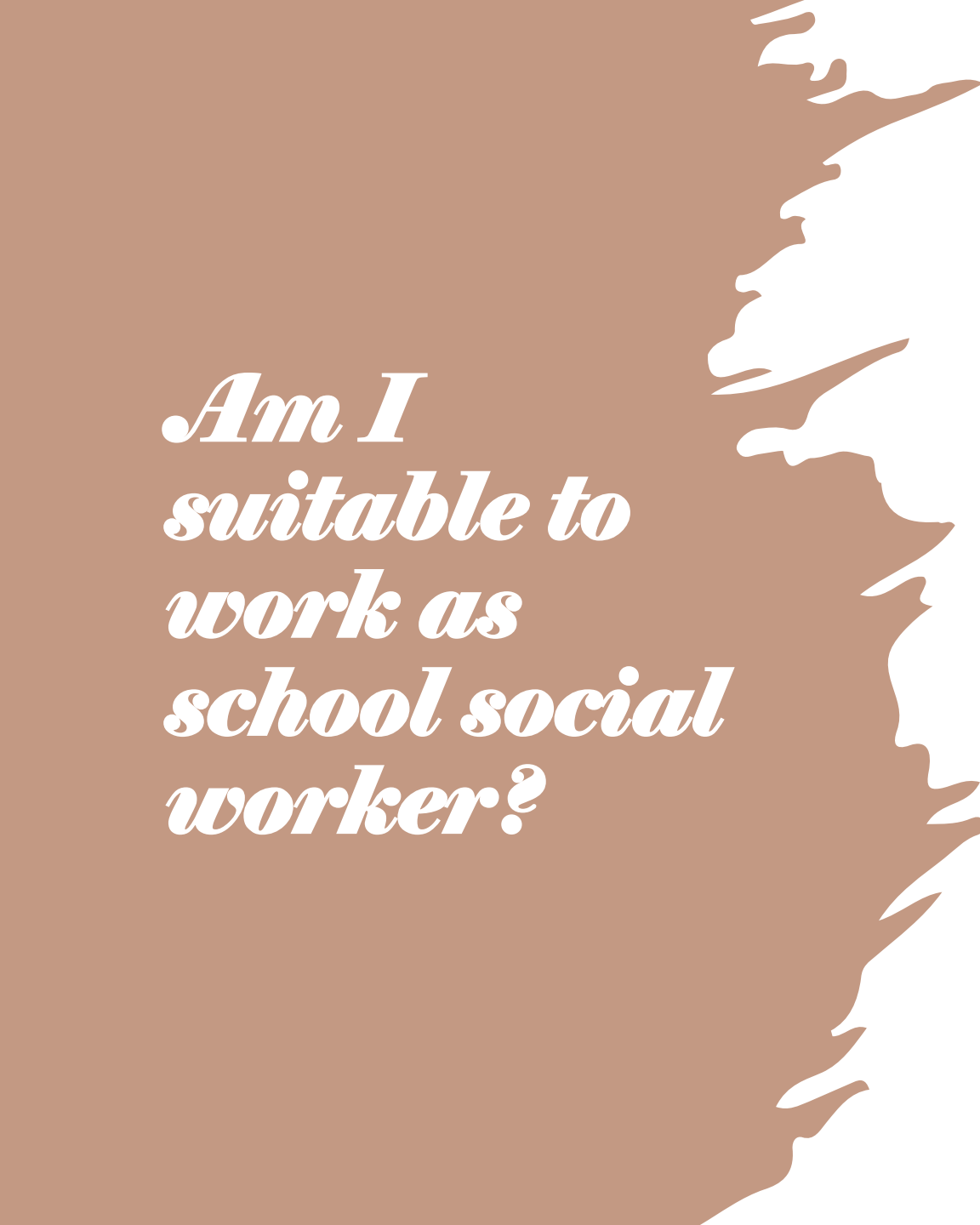


**Am I suitable to work as
school social worker?**



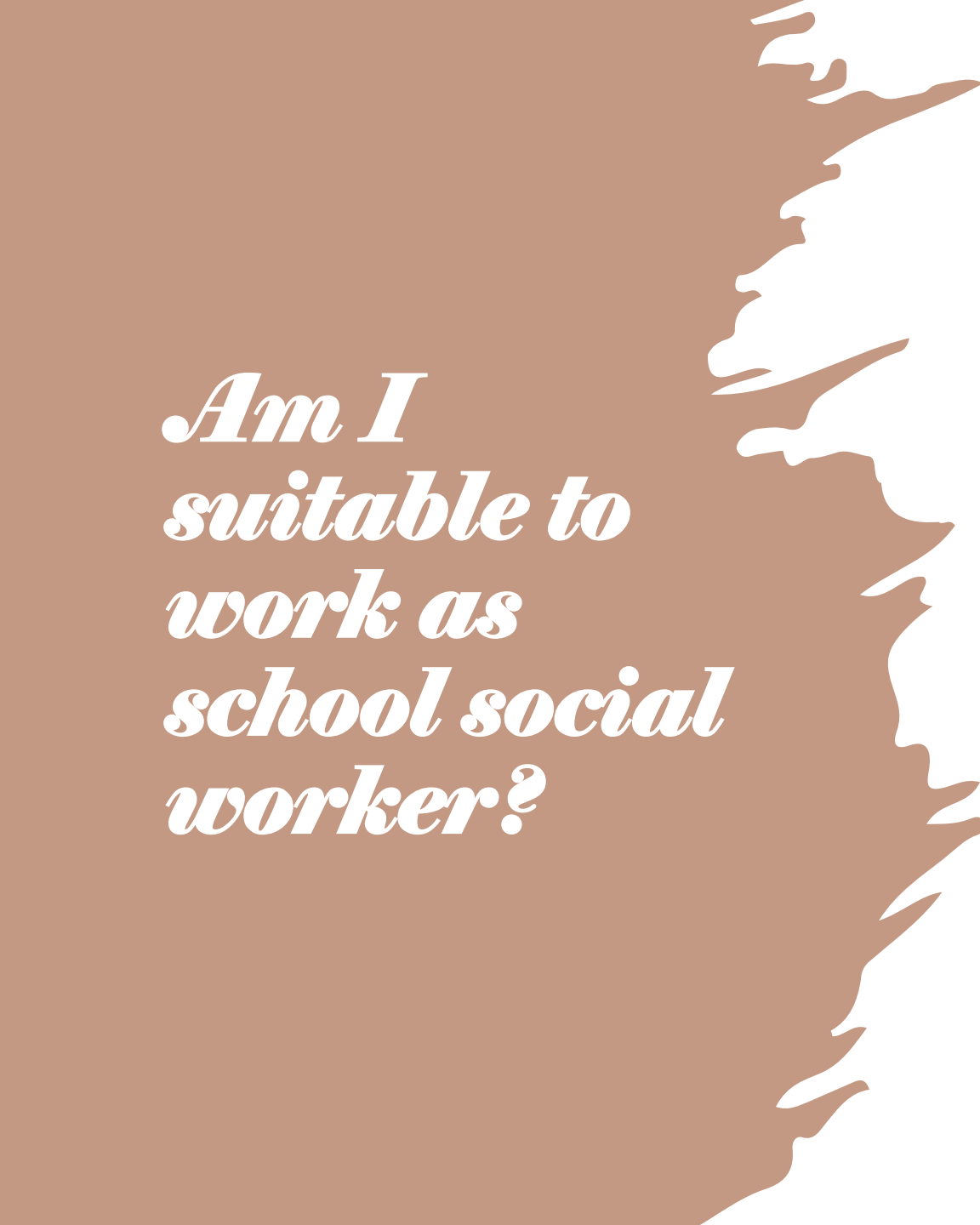
*Am I
suitable to
work as
school social
worker?*

Q1 : Are you an
energetic/active/outgoing
person?



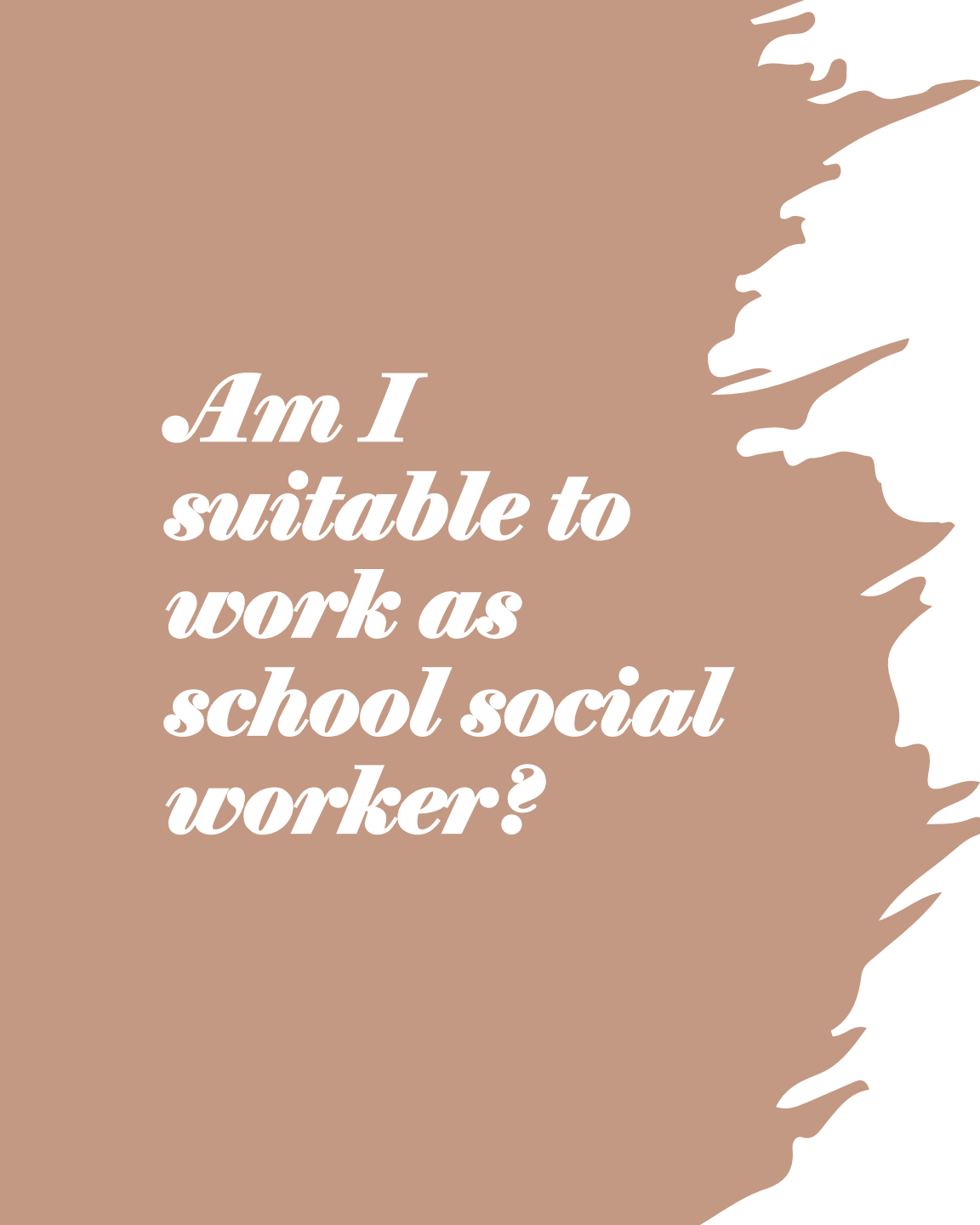
*Am I
suitable to
work as
school social
worker?*

Q2: Can you **work
independently?**



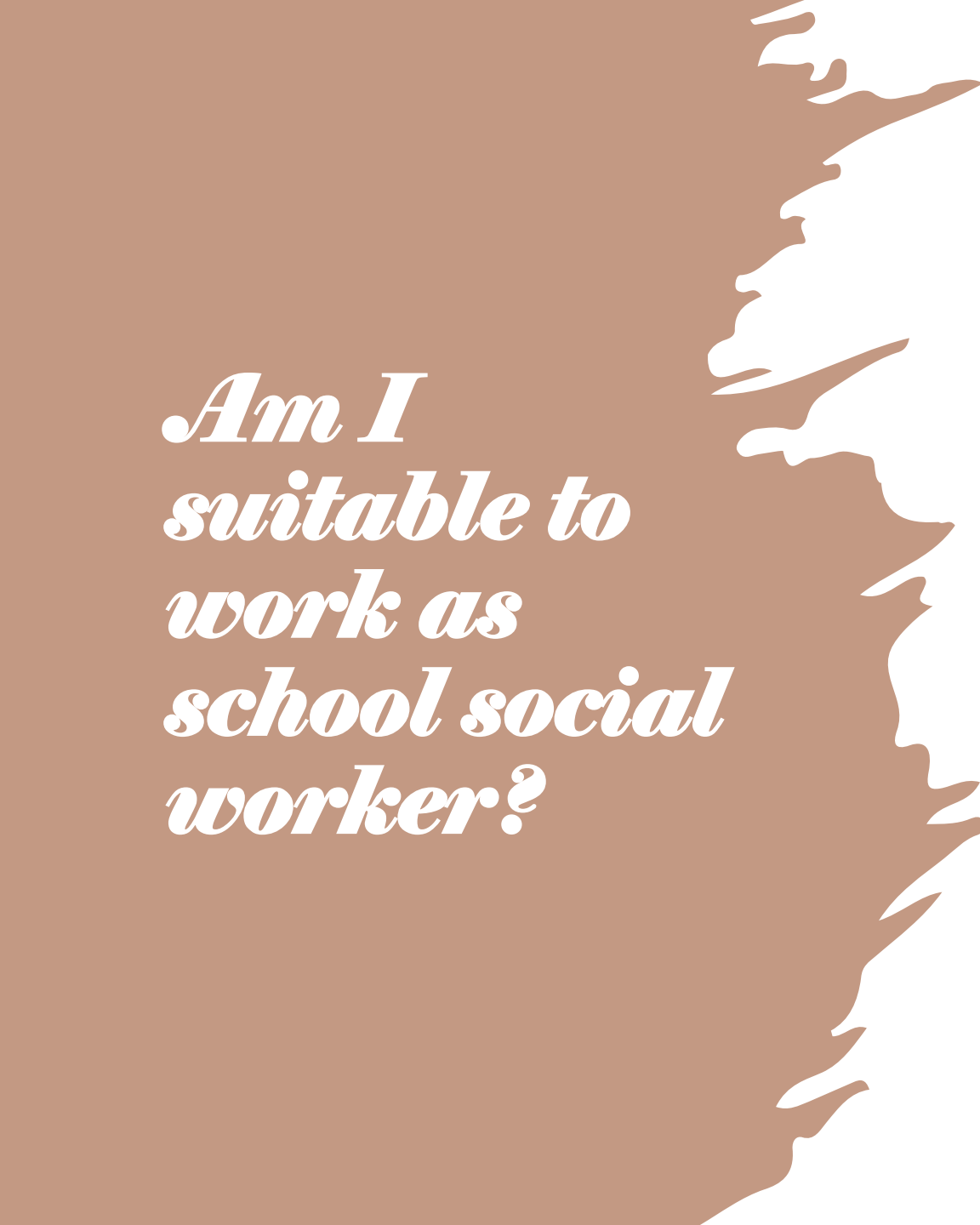
*Am I
suitable to
work as
school social
worker?*

**Q3: Do you mind being
rejected by others?**



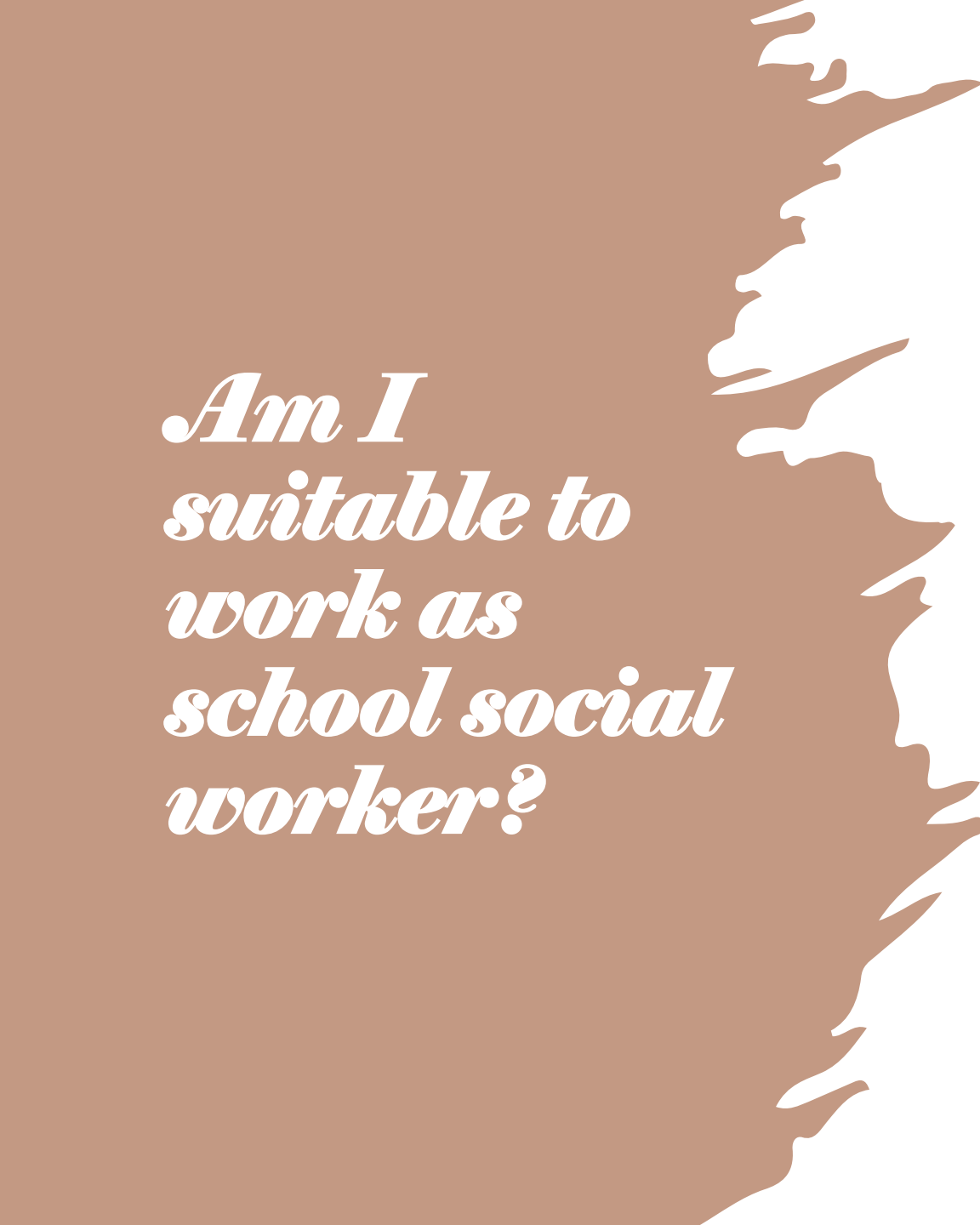
*Am I
suitable to
work as
school social
worker?*

Q4: Do you enjoy getting
along with **children and
young people?**



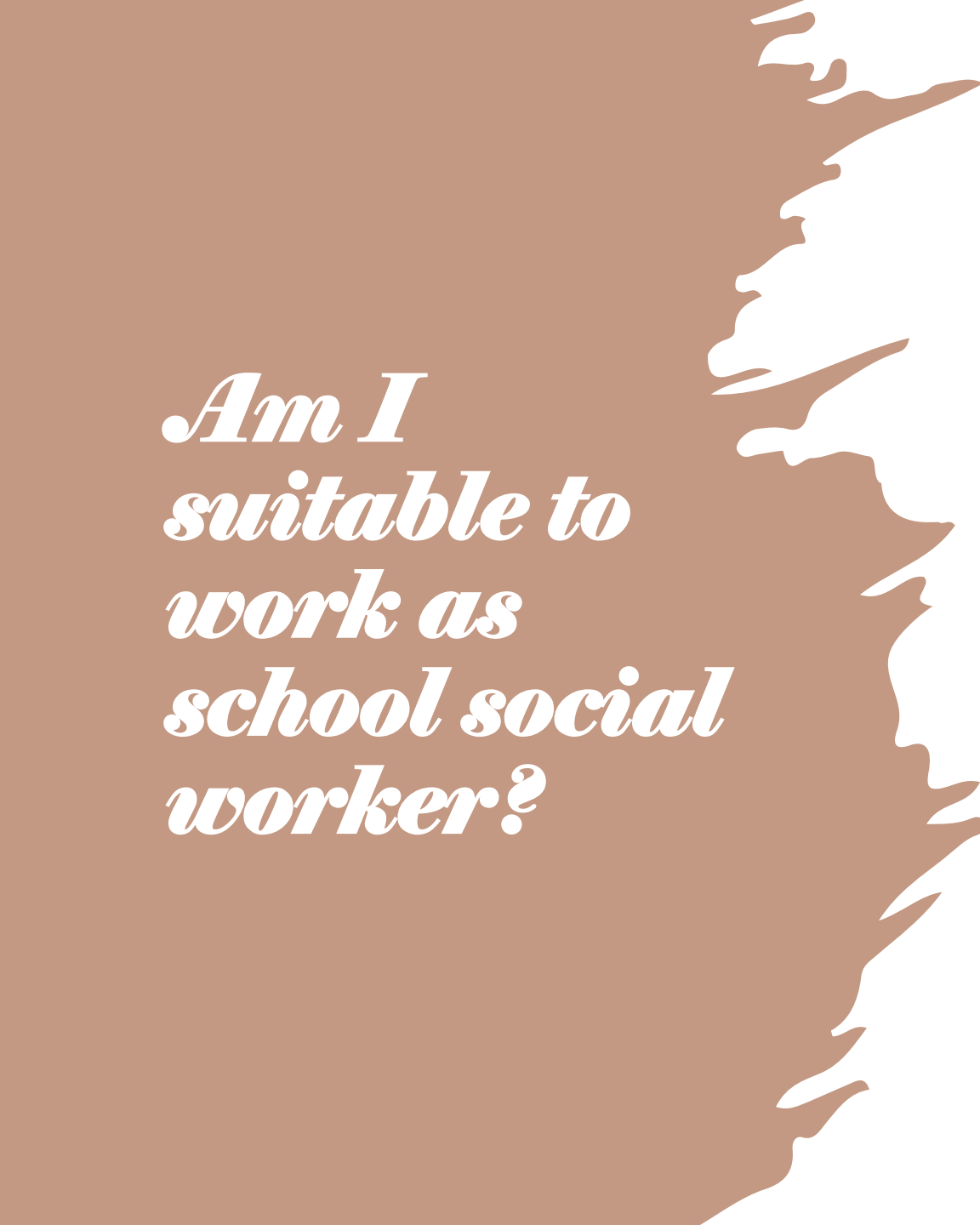
*Am I
suitable to
work as
school social
worker?*

Q5: Are you willing to
**approach the teachers
and parents** actively?



*Am I
suitable to
work as
school social
worker?*

Q6: Do you feel
comfortable to comply
with **school cultures or
rules?**



*Am I
suitable to
work as
school social
worker?*

Q7: Are you confident
enough to **introduce
yourself** in front of many
people?

Placement Requirement

- **Daytime stationing** at school, no evening stationing
- **Concurrent placement** only
- Need to arrange earlier proceeding of **the sexual conviction record check** before the placement commencement

Proper dress code and personal appearance

- Dress Code: properly dress, smart casual, comply with school's usual practice and culture
- Tattoo : Need to be covered, if any
- Hairstyle: Appropriate styles, dye hair with darker color, avoid highlight

Placement Requirement

<u>Choices of Placement</u>	<u>Stationing days</u>
Primary School Services	Usually on Tue and Wed Day Time
Secondary School Services	Usually on Tue and Wed Day Time
Other School Services (i.e. Kindergarten / Schools for Social Development)	Kindergarten: One stationing day might be on another weekday other than Tue or Wed, depending on the agency arrangement Schools for Social Development: Usually on Tue and Wed Day Time

Some placement requirements by schools

- Schools only give one placement offer
- Schools request 1 male and 1 female students
- Schools offer places to 1 MSW and 1 BSW students
- Schools offer places to MSW or BSW students
- Agency purchase mode for placement supervision

Placement Arrangement

- The placement arrangement will depend on the available places provided by the agencies.
- As the service in kindergarten is newly established, the no. of available places is very limited.

The background features a blurred image of a document with a pen resting on it. A large, white, abstract, brush-stroke-like shape is positioned on the left side, partially obscuring the document text. The document text includes words like 'Name' and 'Signature'.

Setting coordinator

Irene Law (CJT 550, 3917-2985)

irenehklaw@hku.hk

References

- Lau, Y. K. (2020). A Critical Review of School Social Work in Hong Kong. In Gao, J. , Baikady, R., Govindappa, L. & Cheng, S.L.(Eds.) *Social Welfare in India and China: A comparative perspective* (p.101-117). Singapore: Palgrave Macmillan.
- Task Group on Multi-Disciplinary Guidelines on School Social Work Service. (2000). *Guideline on multi-disciplinary collaboration in school social work service*. Hong Kong: Social Welfare Department.
- Social Welfare Department. (2024). *School social work*. Retrieved from https://www.swd.gov.hk/tc/pubsvc/young/cat_young/schoolsoci/index.html
- Social Welfare Department. (2024). *Social work Service for Pre-primary Institutions*. Retrieved from https://www.swd.gov.hk/tc/pubsvc/family/cat_childcareservice/ppi/index.html
- Education Bureau(2023). *Student Guidance Services*. Retrieved from <https://www.edb.gov.hk/en/teacher/student-guidance-discipline-services/projects-services/sgs/index.html>



Q & A



THANKS!